



Zurn Fire Protection Solutions

Smarter Solutions, Wider Selection



ZURN.COM US 1.855.ONE.ZURN CANADA 1.877.892.5216



We're Solving Smarter

At Zurn, we aren't just a product and service provider, we're problem solvers – continuously focused on water control, safety and conservation. From our drain systems and interceptors to our finish plumbing, piping systems, and of course, our full line of fire protection solutions, we are known throughout the industry as a reliable leader.

“Zurn meets our expectations with its selection, level of quality, and timely delivery. I was able to find the valve configurations to complete my system. I appreciate the positive shutoff of the OS&Y gate valves. Not to mention, I didn't have to wait a week to get material.”

GARY BLACKMORE

Backflow Specialist – Fire Safety First

Backflow Preventers	4
Shut-Off Valves.....	8
Switches	8
Riser Equipment.....	8
Test and Drain Valves.....	8
Check Valves	8
In-Building Risers.....	9
Backflow Accessories	9
Fire Valves.....	10
Couplings and Fittings.....	11

Full Line. Full Compliance.

It's nice to have selection. It's even better if you can find it all through one manufacturer.

From backflow to every valve in between, complete your system with our Fire Protection Solutions. Our products work together and always meets compliance, so you'll gain peace of mind, yet save some time.



Backflow Preventers

Enhance the service life of your fire protection system and avoid cross-contamination to your potable water supply by installing one of our patented backflow preventers.

Fire Valves

Hose or floor control, field adjustable or factory set, globe or angle body configurations, grooved or threaded connections, our fire valves install how you need them to without a hitch. They are a reliable choice with more options, reliable performance and the lowest lifecycle costs.

Automatic Control Valves

Fire systems can be complex with multiple controls for ranging functionality. Automatic control valves provide steady downstream pressure, allowing high flow rates without risk.

Shut-Off Valves

Whether it's a simple repair or an emergency, turn off the source quickly without affecting your system. Our shut-off valves feature low torque actuation that's easy to maneuver time and again without fail.

Pressure Relief Valves

Take some pressure off of your system – these guys are built to handle it. Our pressure relief valves automatically curb buildup whenever the line exceeds the desired setting.

Stainless Steel Wilkins Building Riser (WBR)

When it comes to getting to the source, we've got you covered. With all stainless steel construction and intuitive installation, you can connect your building to the outside water supply line with fewer joints and without concern.

Backflow Preventers

Zurn is recognized as the market leader in backflow products delivering innovative solutions with the lowest cost of ownership.



Double Check Assemblies (DC)

Low hazard protection

Small Diameter Models: 350, 950XLT



350
3/4"-1"



350
1-1/4"-2"



950XLT
3/4"-2"

Large Diameter Models: 350, 350A, 350AST, 350AR, 350ASTR, 450, 450ST, 450STR



350 2-1/2"-12"
OSY, PI or Butterfly (2-1/2"-10") (optional)



350A 2-1/2"-10"
OSY, PI or Butterfly (optional)



350AST 2-1/2"-10"
OSY, PI or Butterfly (optional)



350AR 2-1/2"-10"
OSY, PI or Butterfly (optional)



350ASTR 2-1/2"-10"
OSY, PI or Butterfly (optional)



450STR 4"-10"
OSY, PI or Butterfly (optional)



450 2-1/2"-10"
OSY, PI or Butterfly (4" - 10") (optional)



450ST 4"-10"
OSY, PI or Butterfly (optional)

Double Check Detector Assemblies (DCDA)

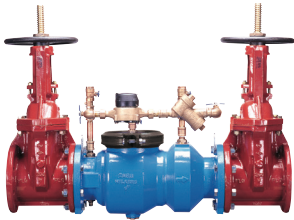
Low hazard protection with a metered bypass to detect leaks and unauthorized water use in unmetered fire sprinkler systems

Small Diameter Models: 950XLTDABFSS



950XLTDABFSS
2"

Large Diameter Models: 350DA, 350ADA, 350ASTDA, 350ADAR, 350ASTDAR, 450STDAR, 450DA, 450STDA



350DA 2-1/2"-12"
OSY (standard),
PI or Butterfly (2-1/2" - 10") (optional)



350ADA 2-1/2"-10"
OSY (standard),
PI or Butterfly (optional)



350ASTDA 2-1/2"-10"
OSY (standard),
PI or Butterfly (optional)



350ADAR 2-1/2"-10"
OSY (standard),
PI or Butterfly (optional)



350ASTDAR 2-1/2"-10"
OSY (standard),
PI or Butterfly (optional)



450STDAR 4"-10"
OSY (standard),
PI or Butterfly (optional)



450DA 4"-10"
OSY (standard),
PI or Butterfly (optional)

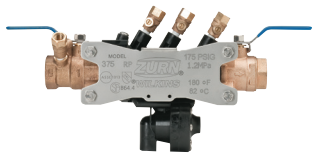


450STDA 4"-10"
OSY (standard),
PI or Butterfly (optional)

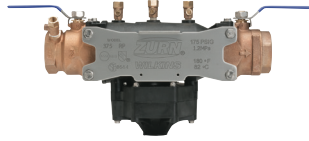
Reduced Pressure Principle Assemblies (RP)

High hazard protection

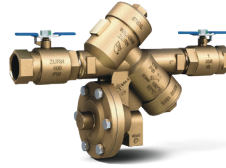
Small Diameter Models: 375, 975XL



375
1/2"-1"



375
1-1/4"-2"



975XL
3/4"-2"

Large Diameter Models: 375, 375A, 375AST, 375AR, 375ASTR, 475, 475ST, 475V, 475STV, 475STR, 475STRV



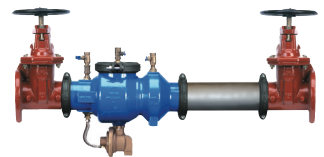
375 2-1/2"-10"
OSY, PI or Butterfly (optional)



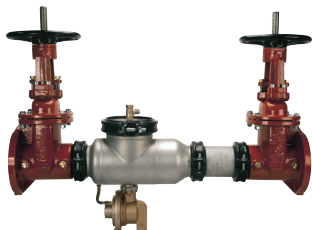
375A 2-1/2"-10"
OSY, PI or Butterfly (optional)



375AST 2-1/2"-10"
OSY, PI or Butterfly (optional)



375AR 2-1/2"-10"
OSY, PI or Butterfly (optional)



375ASTR 2-1/2"-10"
OSY, PI or Butterfly (optional)



475 2-1/2"-10"
OSY, PI or Butterfly (4" - 10") (optional)



475ST 4"-10"
OSY, PI or Butterfly (optional)



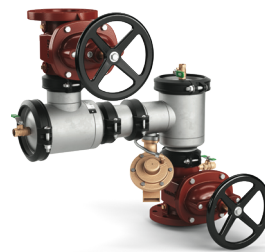
475V 4"-10"
OSY, PI or Butterfly (optional)



475STV 4"-10"
OSY, PI or Butterfly (optional)



475STR 4"-10"
OSY, PI or Butterfly (optional)

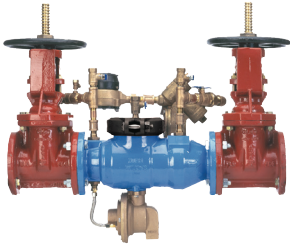


475STRV 4"-10"
OSY, PI or Butterfly (optional)

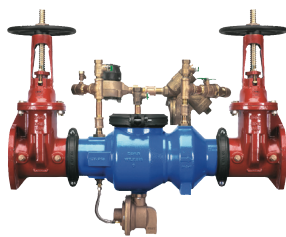
Reduced Pressure Detector Assemblies (RPDA)

High hazard protection with a metered bypass to detect leaks and unauthorized water use in unmetered fire sprinkler systems

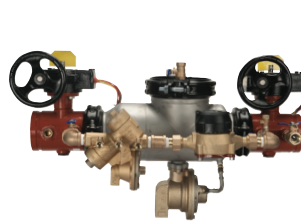
Large Diameter Models: 375DA, 375ADA, 375ASTDA, 375ASTDAR, 475DA, 475STDA, 475DAV, 475STDAV, 475STDAR, 475STDARV



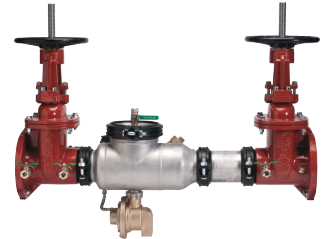
375DA 2-1/2"-10"
OSY (standard),
PI or Butterfly (2-1/2" - 10") (optional)



375ADA 2-1/2"-10"
OSY (standard),
PI or Butterfly (optional)



375ASTDA 2-1/2"-10"
OSY (standard),
PI or Butterfly (optional)



375ASTDAR 2-1/2"-10"
OSY (standard),
PI or Butterfly (optional)



475DA 4"-10"
OSY (standard), PI or Butterfly (optional)



475STDA 4"-10"
OSY (standard), PI or Butterfly (optional)



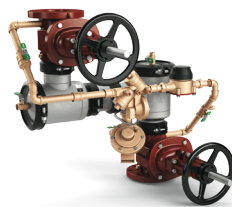
475DAV 4"-10"
OSY (standard), PI or Butterfly (optional)



475STDAV 4"-10"
OSY (standard), PI or Butterfly (optional)



475STDAR 4"-10"
OSY (standard), PI or Butterfly (optional)



475STDARV 4"-10"
OSY (standard), PI or Butterfly (optional)

Single Check/Dual Check

Non-hazardous applications

Models: 310/310DA, 700XLFP



310/310DA
4"-8"



700XLFP
1"-1-1/2"

Shut-Off Valves

Models: 48OSY, 48OSYG, 480OSYGXF, F48OS&YF, 48PI, 49, F49, F49BR, F49BRG



48OSY 2-1/2\"-12\"
Flange x Flange Gate Valve



48OSYG 2-1/2\"-10\"
Groove x Groove Gate Valve



48OSYGXF 2-1/2\"-10\"
Groove x Flange Gate Valve



F48OS&YF 2-1/2\"-10\"
Untapped Flanged x Flanged
Gate Valve



48PI 2-1/2\"-12\"
Post Indicator Gate Valve
Options: FxF, FxG, GxG



49 2-1/2\"-10\"
Butterfly Valve
Options: GxG, GxF, FxG



F49 2-1/2\"-8\"
Fire Butterfly Valve



F49BR 1\"-2-1/2\"
Powerball Butterfly Valve
Threaded Connections



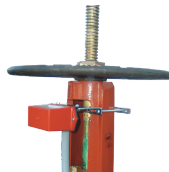
F49BRG 1\"-2-1/2\"
Powerball Butterfly Valve
Grooved Connections

Switches

Models: BVMS, OSY-40



BVMS 3/4\"-2\"
Ball Valve Monitor Switch



OSY-40 2-1/2\"-10\"
Gate Valve Supervisory Switch

Model: FTD



FTD 1\"-2\"
Inline Body

Test and Drain Valves

Riser Equipment

Commercial Risers

Models: FEZR, F210R



FEZR 2\"-6\"
Standard: riser comes standard with
test and drain valve, water flow detector switch
and a pressure gauge



F210R 2-1/2\"-8\"
Optional (Sold Separately)*: Riser Check Trim Kits
(Model CheckTrim)

Check Valves

Model: F210



F210 2\"-8\"
Check Valve

In-Building Risers

Models: WBR, WBR6X8.5, WBR-F



WBR 4"-10"
Grooved Outlet



WBR6X8.5 4"-10"
Extended 8.5 ft vertical leg
grooved outlet



WBR-F 4"-10"
Flanged Outlet

Backflow Accessories

Setters, Air Gap Drain, Repair Kits, Test Kits



Valve Setters 2-1/2"-10"
FLS, MJFS, MJS



**Valve Setters
400ST Series 4"-10"**
FLSST, MJFSST, MJSST



Air Gap Drain 1/4"-10"
AG-4 through AG-14



Test Kits



Repair Kits
many different kits available for all models and sizes

Fire Valves

Hose Valves

Model: F100



F100 1-1/2", 2-1/2"
Inlet: FNPT or Grooved
Outlet: NHT or FNPT
Option: Special Thread

Restricting Hose Valves

Model: F105



F105 1-1/2", 2-1/2"
Inlet: FNPT or Grooved
Outlet: NHT or FNPT
Option: Special Thread

Pressure Reducing Valves

Pressure-Tru® Field Adjustable Models: ZW5000, ZW5004, Z3000, Z3005, Z3004, Z2100, Z2105



ZW5000 2-1/2"
Hose Valve
Body: Angle or In-Line (Globe Type)
Inlet: FNPT or Grooved (ZW5000),
FNPT (ZW5000F)
Outlet: NHT (ZW5000), FNPT (ZW500F),
Option: Special Thread (ZW5000)



ZW5004 2-1/2"
Floor Control Valve
Body: Angle or In-Line (Globe Type)
Inlet: FNPT or Grooved
Outlet: FNPT or Grooved



Z3000 2-1/2"
Hose Valve
Body: Angle or In-Line (Globe Type)
Inlet: FNPT or Grooved
Outlet: NHT
Option: Special Thread



Z3005 2-1/2"
Hose Valve
Body: Angle or In-Line (Globe Type)
Inlet: FNPT
Outlet: FNPT



Z3004 2-1/2"
Floor Control Valve
Body: Angle or In-Line (Globe Type)
Inlet: FNPT or Grooved
Outlet: FNPT or Grooved



Z2100 1-1/2"
Hose Valve
Body: Angle
Inlet: FNPT
Outlet: NHT
Option: Special Thread



Z2105 1-1/2"
Hose Valve
Body: Angle
Inlet: FNPT
Outlet: FNPT

Pressure Reducing Valves

Pressure-Tru Factory Set Models: ZW4000, ZW4004, ZW4100, ZW4104



ZW4000 2-1/2"
Hose Valve
Body: Angle or In-Line (Globe Type)
Inlet: FNPT or Grooved
Outlet: NHT
Option: Special Hose Thread



ZW4004 2-1/2"
Floor Control Valve
Body: Angle or In-Line (Globe Type)
Inlet: FNPT or Grooved
Outlet: FNPT or Grooved



ZW4100 1-1/2"
Hose Valve
Body: Angle
Inlet: FNPT or Grooved
Outlet: NHT
Option: Special Thread



ZW4104 1-1/2"
Floor Control Valve
Body: Angle
Inlet: FNPT or Grooved
Outlet: FNPT or Grooved

Pilot Operated Valves (ACV)

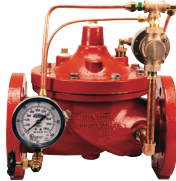
Models: ZW209FP, ZW215FP, ZW205FP



ZW209FP 1-1/4"-10"
Pressure Reducing Valve



ZW215FP 1-1/4"-10"
Fire Pump Suction Control Valve



ZW205FP 2"-10"
Pressure Relief Valve

Fire Department Connections

Model: FDC2



FDC2 4" NPT x 2-1/2" NH
Options: Back Inlet, Bottom Inlet

Relief Valves

Model: P4000A

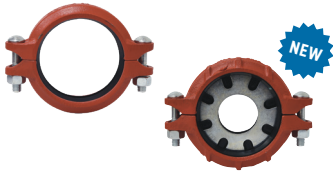


P4000A 1/2", 3/4"
Pressure Relief Valve

Couplings and Fittings

Models: FP23, FP52, FP53, FP56, FP3, FP63, FP8, FP51

Couplings



FP23
Types: Reducing, Rigid (R), Flex (F)
Sizes: 1"-10" (Rigid), 1-1/4"-10" (Flex),
1-1/2" x 1-1/4" to 8" x 6" (Reducing)

Elbows



FP52 1-1/4"-10"
Types: 90 Degree Short (S), 90 Degree Standard,
45 Degree (-45), 22.5 Degree (-22), 11.25 Degree
(-11), End of Run Adapter (GTF)

Tees



FP53 1-1/4"-10"
Types: Tee Short Radius (S), Tee Standard Radius,
Reducing Branch Tee (R)

Crosses



FP56 2"-8"
Crosses

Caps



FP3 1-1/4"-8"
Caps

Mechanical Tees



FP63 1-1/4"-8"
Types: Grooved (G), Threaded (TF), U-bolt (LTF)

Grooved Flanges



FP8 2"-10"
Type: Grooved Split

Grooved Reducers



FP51 2"-10"
Type: Concentric

Learn more about our fire protection products at zurn.com/fire

Zurn Engineered Water Solutions® is a recognized leader in commercial, municipal, and industrial markets, delivering sustainable building solutions for new construction and retrofit applications. At Zurn, we are committed to providing smart solutions that save both time and money. Our goal is serving the customer through innovation, continuous improvement, and assurance behind every installation. Choose Zurn as a reliable, recognized manufacturer to supply your entire installation, from behind the wall rough-in, to finish trim product and fixture systems.



Zurn Wilkins
1747 Commerce Way
Paso Robles, CA 93446, 855.663.9876

In Canada
Zurn Industries Limited
7900 Goreway Drive, Unit 10
Brampton, Ontario L6T 5W6, 877.892.5216

US 1.855.ONE.ZURN CANADA 1.877.892.5216 [ZURN.COM](https://www.zurn.com)

Form No. 480-171, 10/20